



ONION RIVER RACING TRAINING CRITERIUM SERIES

SPONSORED BY
NATIONAL LIFE GROUP
THE MOUNTAIN SHOP
ONION RIVER SPORTS

Sundays: April 12th through May 10th, 2009
Held under USA Cycling Permit (pending)
Location: National Life Group Headquarters,
1 National Life Drive, Montpelier, VT

Course: The 0.9-mile circuit around National Life Group's headquarters consists of a 300 meter long downhill followed by a hard right hand corner, a winding 350 meter uphill section in two steps, and a flat section through the upper parking lot to the start/finish on a flat straightaway near the main entrance. There will be no neutral support – so bring your own spare wheels. Free Lap rule in effect. Course closed to traffic.

Format: The C event riders will be escorted throughout the course by experienced racers to learn cornering and pack riding skills. The B Race is a conventional race for entry level and Cat IV racers. One day licenses for new racers and 2009 USAC license renewals may be purchased on-site. The A Race uses a points format with sprints every five laps for five places (7-5-3-2-1). The final sprint is scored double (14-10-6-4-2).

Directions: Off I-89, take exit 8 onto Memorial Dr., turn right at first light onto National Life Dr., Climb hill and take 2nd left into National Life parking lot. Registration and start/finish will be near the main building.

Registration: at www.bikereg.com or onsite. Registration opens at 10:30 AM and closes 15 min prior to start of each event. One day licenses are available to unlicensed B and C race participants for an additional \$10, as well as 2009 USA Cycling license applications and renewal forms for those wishing to convert one day licenses to annual licenses. Refunds available only on site, in case of cancellation due to heavy rain or lightning or intervening circumstances. Canadian cyclists with international (UCI) licenses are welcome!

General Information at www.onionriverracing.com

Category	Distance	Start Time	Prizes/Places	Payout	Entry Fee	Field Limit
C Ride: Learning Category	20 min	11:00 AM	Controlled Event	N/A	Free	25
B Race Category IV-V Men & Women	45 min	11:30 AM	\$50+ in Cash or Merchandise	5 places	\$10	50
A Points Race: Cat I-III Men & Women	60 min	12:30 PM	\$100+ in Cash or Merchandise	5 places	\$10	50

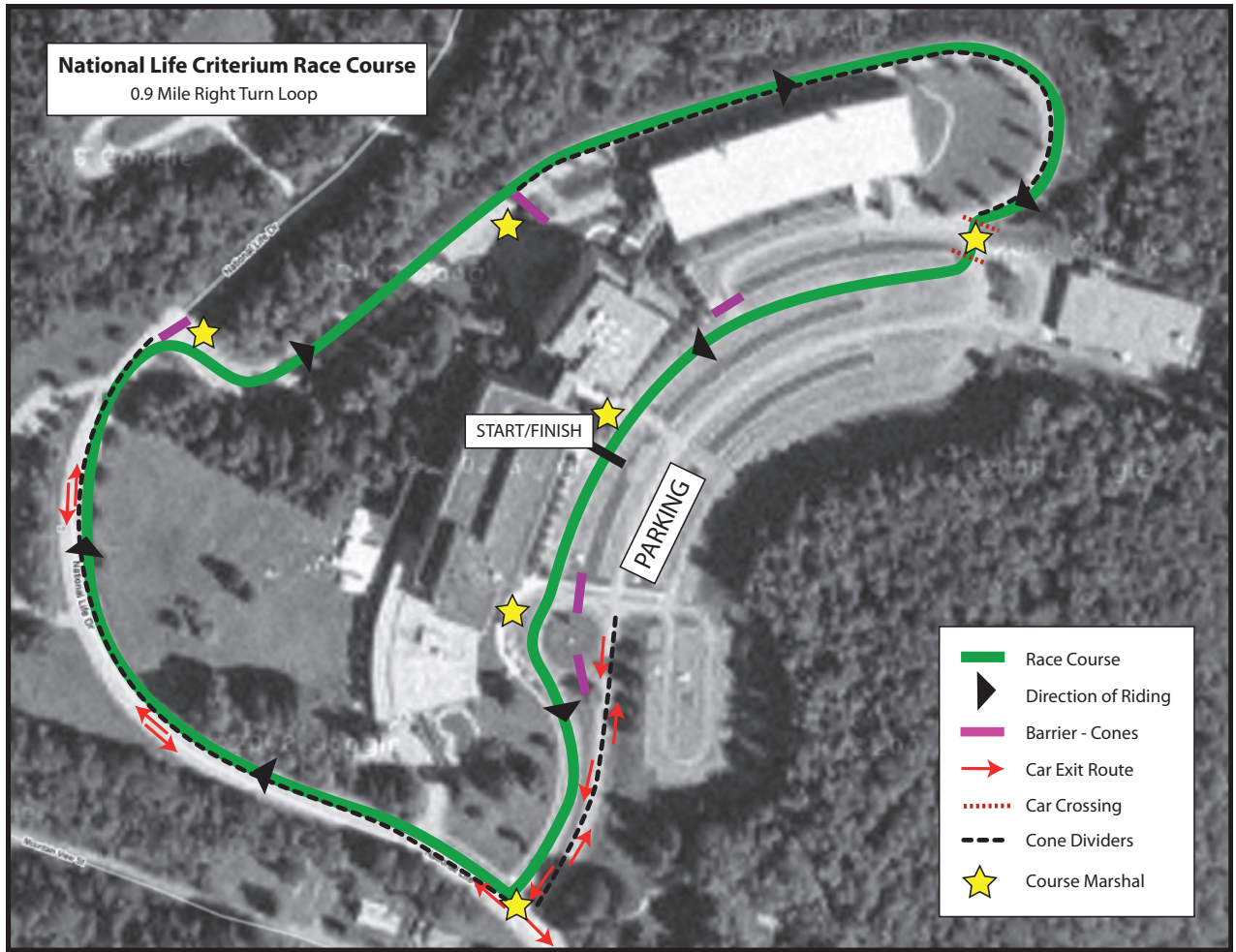
Event Promoters:
Arthur Foelsche
Tel: 802-498-7668
arthur@orsracing.com








John McGill
Tel: 202-680-0448
john@orsracing.com



Only the above listed races are permitted and sanctioned by USA Cycling. No other race associated activities are sanctioned by USA Cycling.

National Life Criterium Race Course
0.9 Mile Right Turn Loop



-  Race Course
-  Direction of Riding
-  Barrier - Cones
-  Car Exit Route
-  Car Crossing
-  Cone Dividers
-  Course Marshal